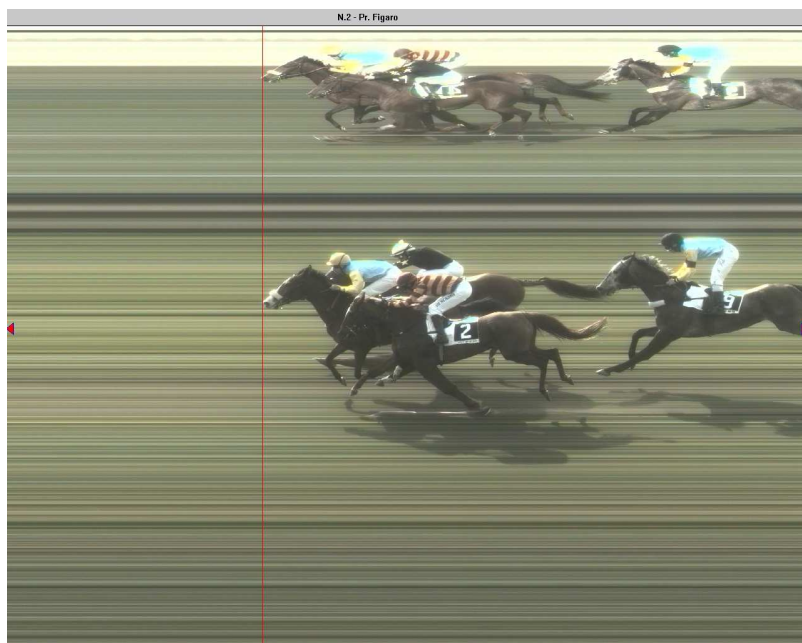


**Risultati di Pisa - Domenica 22 Marzo 2015 - Corsa n. 2**

2	<b>FIGARO</b> Euro 6.600 TRIO	1800
15.25	(Piana - HANDICAP ) Tempo Coperto - Terreno Morbido	<b>P.Media</b>



1	<b><u>ROVO DI CHIA -PSA-</u></b> (6) Cb5 <b>Manueddu Mauro</b>	2.01.1	<b>56</b>	(5,91)
2	<b><u>OROGIALLO -PSA-</u></b> (4) Ms8 <b>Polli Nicol</b>	T.	<b>57</b> L	(9,15)
3	<b><u>MONNALISA -PSA-</u></b> (2) Fs7 <b>Di Stasio Cristiano</b>	T.	<b>58</b>	(2,50)
4	<b><u>SOLE DI CHIA -PSA-</u></b> (9) Mr4 <b>Fele Andrea (*)</b>	1 1/4	<b>53</b> L	(5,91)
5	<b><u>NASCO -PSA-</u></b> (1) Ms7 <b>Migheli Antonio Domenico</b>	8	<b>62</b> L	(4,29)

V. 5,91 (8) 5,91 (6)(8) 5,91 (9)

P. 4,49 (6) 2,75 (4) 1,38 (2)

Quote Acc. 47,04

Accp. 4,92 (2-4) 9,82 (2-6) 19,58 (4-6)

T. 519,20

2	<b>FIGARO</b>				1800
	Euro 6.600 TRIO				
15.25	(Piana - HANDICAP ) Tempo Coperto - Terreno Morbido				<b>P.Media</b>
6	<b><u>QUADRO DI CHIA-PSA</u></b> (8) Mgr6 <b>Salis Pasquale</b>	1 ¼	<b>53½</b>	(5,91)	
7	<b><u>QUIRRA BY ESPANIA</u></b> (5) Fgr6 <b>Fadda Antonio</b>	5	<b>56</b> L	(4,56)	
8	<b><u>SEROM -PSA-</u></b> (7) Ms4 <b>Sanna Mario</b>	7	<b>56</b> L	(6,63)	
9	<b><u>SIBILLINA -PSA-</u></b> (3) Fs4 <b>Sanna Gavino</b>	7	<b>57½</b>	(4,56)	
10	<b><u>SINDIANU -PSA-</u></b> (10) MM4 <b>Santangelo Concetto</b>	15	<b>50½</b>	(52,44)	
	<i>V. 5,91 (8) 5,91 (6)(8) 5,91 (9)</i>				
	<i>P. 4,49 (6) 2,75 (4) 1,38 (2)</i>				
<i>Quote</i>	<i>Acc. 47,04</i>				
	<i>Acp. 4,92 (2-4) 9,82 (2-6) 19,58 (4-6)</i>				
	<i>T. 519,20</i>				